

St. Peters Court , Bury St. Edmunds, IP33 3LY

Isaac Estates are delighted to market this spacious two double bedroom terraced house, conveniently located to the town centre and West Suffolk Hospital.

The property is set over two floors and offers entrance hallway, kitchen with electric oven and hob included (dishwasher can remain), sitting room / dining room. The first floor offers two good sized double bedrooms and bathroom. Externally there is a low maintenance courtyard garden and an allocated parking space.

There will be some internal redecoration before a tenancy can start. Video tour available upon request.

£1,450 Per month

St. Peters Court

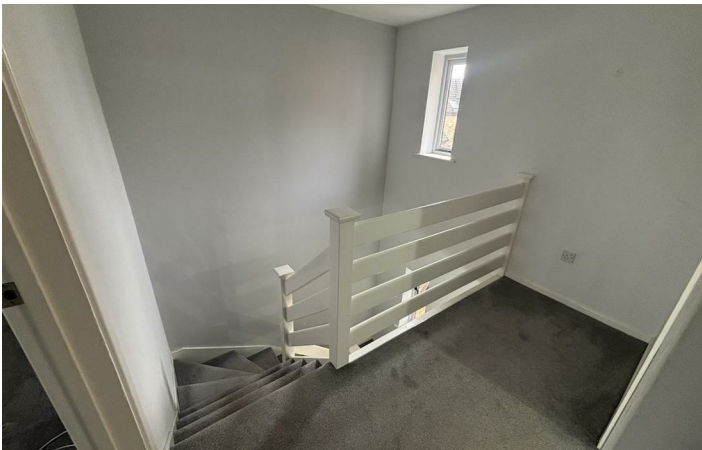
, Bury St. Edmunds, IP33 3LY



- SPACIOUS TWO DOUBLE BEDROOM HOUSE
- SITTING ROOM / DINING ROOM
- LOW MAINTENANCE COURTYARD GARDEN
- COUNCIL TAX BAND C, VIDEO TOUR AVAILABLE UPON REQUEST
- SITUATED CLOSE TO TOWN CENTRE AND WEST SUFFOLK HOSPITAL
- TWO DOUBLE BEDROOMS (ONE WITH FITTED WARDROBE INCLUDED)
- ONE ALLOCATED PARKING SPACE, SOME INTERNAL REDECORATION TO BE CARRIED OUT
- ENTRANCE HALLWAY, KITCHEN WITH OVEN AND HOB INCLUDED
- SHOWER ROOM, UPDATED ELECTRIC HEATING
- MINIMUM TERM CONTRACT TWELVE MONTHS



Directions





Floor Plan

These particulars, whilst believed to be accurate are set out as a general outline only for guidance and do not constitute any part of an offer or contract. Intending purchasers should not rely on them as statements of representation of fact, but must satisfy themselves by inspection or otherwise as to their accuracy. No person in this firm's employment has the authority to make or give any representation or warranty in respect of the property.

12 Langton Place, Hatter Street, Bury St Edmunds, Suffolk, IP33 1NE
Tel: 01284 620011 Email: ryan@isaacestates.co.uk www.isaacestates.co.uk

